

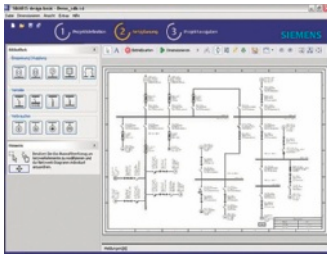
Software for Power Distribution



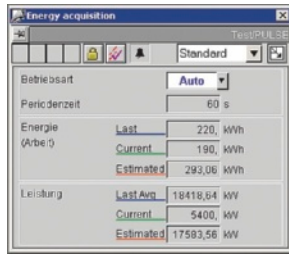
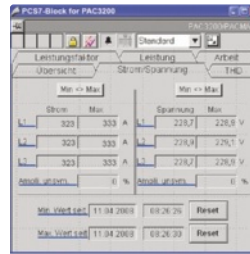
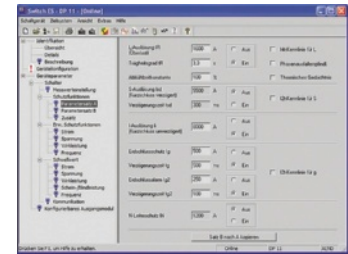
18/2	Introduction
	Dimensioning with SIMARIS design
	<u>SIMARIS design</u>
18/3	- Overview
18/3	- Benefits
18/3	- Application
	Configuring, Visualizing and Controlling with SIMATIC
	<u>SIMATIC PCS 7 powerrate</u>
18/4	- Overview
18/4	- Benefits
18/4	- Application
18/4	- Selection and ordering data
	<u>SIMATIC WinCC powerrate</u>
18/5	- Overview
18/5	- Benefits
18/5	- Application
18/5	- Selection and ordering data
	<u>SIMATIC PCS 7 Library PAC3200</u>
18/6	- Overview
18/6	- Benefits
18/6	- Application
18/6	- Selection and ordering data
	Configuring, Visualizing and Controlling with SENTRON
	<u>Switch ES Power</u>
18/7	- Overview
18/7	- Benefits
18/7	- Selection and ordering data

Introduction

Overview



SIMARIS design

SIMATIC PCS 7 powerrate
SIMATIC WinCC powerrateSIMATIC PCS 7 Library
PAC3200

Switch ES Power

SIMARIS design

Software tool for the quick and effective dimensioning of power distribution for non-residential and industrial buildings:

- Dimensioning on the basis of real products according to acknowledged technical rules and standards (VDE, IEC)
- Automatic access to an integrated product database
- Easy implementation and modification in the planning and realization concept
- Reduction of routine work

SIMATIC PCS 7 powerrate
SIMATIC WinCC powerrate

SIMATIC PCS 7 and WinCC powerrate are add-ons to PCS 7 and WinCC respectively and throw light on power consumption from the infeed to the load.

- Identification of power-intensive consumer devices and processes in order to introduce measures for improving power efficiency
- Comparison of consumption profiles for greater efficiency of process design
- Optimizing the company according to energy parameters based on an assessment of consumption and costs
- Complying with the contractually agreed power limit, thus preventing higher power supply costs or penalty payments

SIMATIC PCS 7 Library PAC3200

SIMATIC PCS 7 Library PAC3200 enables the seamless integration of the SENTRON PAC3200 multifunction measuring instrument in the PCS 7 process world.

Switch ES Power

Shared software platform for communication-capable SENTRON 3WL and SENTRON 3VL circuit breakers:

- Parameterization, documentation, operation and monitoring in one software
- Clear presentation of all available parameters
- All the available status information and measured values are displayed in dialog boxes
- Software for SENTRON 3WL and SENTRON 3VL

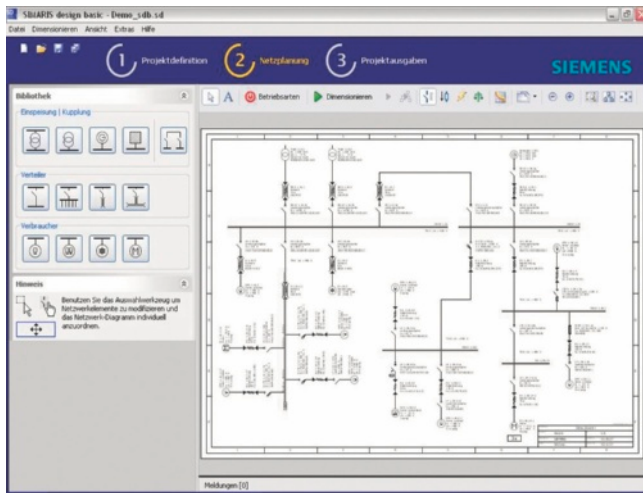
Software for Power Distribution

Dimensioning with SIMARIS design

SIMARIS design

Overview

SIMARIS design



SIMARIS design is a software tool for the quick and effective dimensioning of power distribution for non-residential and industrial buildings.

In the planning phase already, the complete circuit can be dimensioned on the basis of real products. This avoids additional costs due to uncoordinated systems in the implementation phase. The right components and distribution systems for the case in question are selected automatically in the light of the product data stored in SIMARIS design.

Every configuration of the electric power distribution is subject to frequent change and adaptation in the implementation phase as well as in the planning phase. SIMARIS design incorporates each change into the supply concept and automatically checks its reliability in terms of the regulations and standards currently in force.

Even an analysis of selectivity, for example for safety power supply elements, can be simply performed with SIMARIS design. All these steps are precisely documented in SIMARIS design.

More information and order options can be found on the Internet at:

<http://www.siemens.com/simarisdgign>

Benefits

- Reduction of routine work
- Dimensioning on the basis of real products according to acknowledged technical rules and standards
- Integrated product database
- Detailed knowledge of products and systems not required
- Easy implementation and modification in the planning and realization concept
- Clear-cut presentation of changes with specification of the revision date
- Detailed parts lists with exact product descriptions
- Easy adaptation to changes in use or expansions
- Comprehensive documentation with simple data transfer (Office, CAD etc.)

Application

SIMARIS design is suitable for dimensioning electric power distribution systems in all industrial and non-residential buildings. From shopping centers to hospitals and production buildings – with SIMARIS design it is possible to reduce the amount of work required for the overall planning of power distribution systems and hence the time spent on selecting and dimensioning the necessary equipment.

Software for Power Distribution

Configuring, Visualizing and Controlling with SIMATIC

SIMATIC PCS 7 powerrate

Overview

SIMATIC PCS 7 powerrate



SIMATIC PCS 7 is an add-on to PCS 7 which throws light on power consumption from the infeed to the load. Power data are continuously collected, archived and processed further. With an exact knowledge of the consumption profile it is possible to identify savings potential, optimize your power supply conditions and hence lower your power costs. Monitoring the contractually agreed power limit helps on the one hand to prevent unnecessarily high power prices or penalties and on the other hand to make full use of the fixed power limit.

Full integration in PCS 7 enables the easy use of standard interfaces, e.g. to SIMATIC IT, or standard functionalities from PCS 7.

SIMATIC PCS 7 powerrate is made up of the following components:

- Modules for the acquisition and processing of power data
- Faceplates for the presentation and processing of power data
- Excel macro for allocating power data to cost centers
- Components for implementing load management (calculating trends, monitoring limits, enabling/disabling loads)
- Faceplates for presenting results and for configuring load management
- Excel macro for determining the duration curve as a basis for load management decisions

Benefits

- Identification of power-intensive consumer devices and processes in order to introduce measures for improving power efficiency
- Comparison of consumption profiles for greater efficiency of process design
- Optimizing the company according to energy parameters based on an assessment of consumption and costs
- Complying with the contractually agreed power limit, thus preventing higher power supply costs or penalty payments

Application

SIMATIC PCS 7 powerrate is used in all areas in which PCS 7 is used and energy saving considerations play a major role. Full integration in PCS 7 means that there is no need for a special system environment. Predefined modules and symbols give you the assurance of building on tested and certified product components, with interfaces which enable customized expandability.

Selection and ordering data

Version	DT	Order No.	Price per PU	PU (UNIT, SET, M)	PS*	PG	Weight per PU approx. kg
SIMATIC PCS 7 powerrate V 2.0							
For SIMATIC PCS 7 V 6.1 SP1, V 6.1 SP2 and V 7.0 SP1							
• Engineering license and runtime license for one automation system	B	3ZS2 785-1CC20-0YG0		1	1 unit	133	0.230
• Runtime license for one automation system	B	3ZS2 785-1CC20-6YH0		1	1 unit	133	0.230
Upgrade from SIMATIC PCS 7 powerrate V 1.0 to V 2.0							
For SIMATIC PCS 7 V 6.1 SP1, V 6.1 SP2 and V 7.0 SP1							
• Engineering license and runtime license for one automation system	B	3ZS2 785-1CC20-0YE0		1	1 unit	133	0.230
• Runtime license for one automation system	B	3ZS2 785-1CC20-6YF0		1	1 unit	133	0.230

Note: One license per automation system is required!

* You can order this quantity or a multiple thereof.

Software for Power Distribution

Configuring, Visualizing and Controlling with SIMATIC

SIMATIC WinCC powerrate

Overview

SIMATIC WinCC powerrate



SIMATIC WinCC powerrate is an add-on to WinCC which throws light on power consumption from the infeed to the load. Power data are continuously collected, archived and processed further. With an exact knowledge of the consumption profile it is possible to identify savings potential, optimize your power supply conditions and hence lower your power costs. Monitoring the contractually agreed power limit helps on the one hand to prevent unnecessarily high power prices or penalties and on the other hand to make full use of the fixed power limit.

Full integration in WinCC enables the easy use of standard interfaces or standard functionalities from WinCC.

SIMATIC WinCC powerrate is made up of the following components:

- Modules for the acquisition and processing of power data
- Faceplates for the presentation and processing of power data
- Excel macro for allocating power data to cost centers
- Components for implementing load management (calculating trends, monitoring limits, enabling/disabling loads)
- Faceplates for presenting results and for configuring load management
- Excel macro for determining the duration curve as a basis for load management decisions

Benefits

- Identification of power-intensive consumer devices and processes in order to introduce measures for improving power efficiency
- Comparison of consumption profiles for greater efficiency of process design
- Optimizing the company according to energy parameters based on an assessment of consumption and costs
- Complying with the contractually agreed power limit, thus preventing higher power supply costs or penalty payments

Application

SIMATIC WinCC powerrate is used in all areas in which WinCC is used and energy saving considerations play a major role. Full integration in WinCC means that there is no need for a special system environment. Predefined modules and symbols give you the assurance of building on tested product components, with interfaces which enable customized expandability. SIMATIC WinCC powerrate V 2.0 can be used with SIMATIC S7-317 and higher.

Selection and ordering data

Version	DT	Order No.	Price per PU	PU (UNIT, SET, M)	PS*	PG	Weight per PU approx. kg
SIMATIC WinCC powerrate V 2.0							
For SIMATIC WinCC V 6.2 SP2 and V 7.0							
• Engineering license and runtime license for one automation system	B	3ZS2 795-1CC20-0YG0		1	1 unit	133	0.230
• Runtime license for one automation system	B	3ZS2 795-1CC20-6YH0		1	1 unit	133	0.230
Upgrade from SIMATIC WinCC powerrate V 1.0 to V 2.0							
For SIMATIC WinCC V 6.2 SP2 and V 7.0							
• Engineering license and runtime license for one automation system	B	3ZS2 795-1CC20-0YE0		1	1 unit	133	0.230
• Runtime license for one automation system	B	3ZS2 795-1CC20-6YF0		1	1 unit	133	0.230

Note: One license per automation system is required!

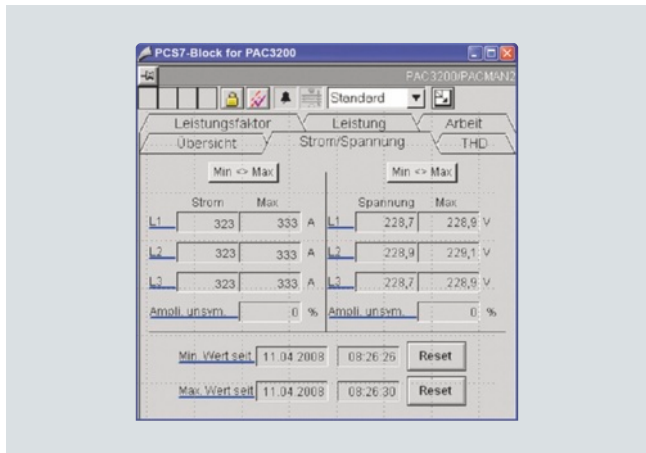
Software for Power Distribution

Configuring, Visualizing and Controlling with SIMATIC

SIMATIC PCS 7 Library PAC3200

Overview

SIMATIC PCS 7 Library PAC3200



The PCS 7 function block library - SIMATIC PCS 7 Library PAC3200 - for the SENTRON PAC3200 multifunction measuring instrument enables the seamless integration of the multifunction instrument in the PCS 7 process world.

It comprises one driver block, one diagnostics block and the faceplates. The modules in the SIMATIC S7 supply energy data to the faceplates in the user interface of the process control system, generate signals and guarantee connection to the maintenance system of PCS 7.

Faceplates

Faceplates serve as a user interface for operating and monitoring and enable technologically important values and functions of the SENTRON PAC3200 to be displayed and performed as a PCS 7 object.

Between the faceplates and the modules as well as between the modules and the SENTRON PAC3200 there exist on the system side bidirectional communication connections not only for displaying values in the faceplates but also for forwarding input data to the device.

This makes the SENTRON PAC3200 power monitoring device an integral component of PCS 7.

Supported operating systems are the same as for SIMATIC PCS 7, see [Catalog ST PCS 7](#) or our [Mail section "Automation Systems" --> "Process Automation" --> "Process Control Systems"](#).

Benefits

- Full integration of SENTRON PAC3200 in the PCS 7 process control system through PROFIBUS DPV1 using a certified PCS 7 add-on module
- Reading out and displaying device data
- Inputting limit values for monitoring through the driver block
- Resetting values on the device (min/max values)

Application

SIMATIC PCS 7 Library PAC3200 is used in all areas in which PCS 7 is used. Full integration in PCS 7 means that there is no need for a special system environment. Predefined modules and symbols give you the assurance of building on tested and certified product components.

Selection and ordering data

Version	DT	Order No.	Price per PU	PU (UNIT, SET, M)	PS*	PG	Weight per PU approx. kg
SIMATIC PCS 7 Library PAC3200							
For SIMATIC PCS 7 V 6.1 SP1 and PCS 7 V 7.0 SP1							
• Engineering license and runtime license for one automation system	B	3ZS2 781-1CC10-0YG0		1	1 unit	133	0.250
• Runtime license for one automation system	B	3ZS2 781-1CC10-6YH0		1	1 unit	133	0.250

Note: One license per automation system is required!

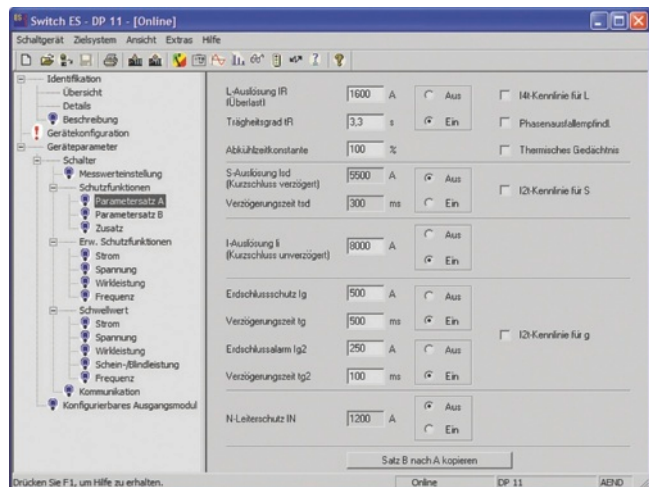
* You can order this quantity or a multiple thereof.

Software for Power Distribution Configuring, Visualizing and Controlling with SENTRON

Switch ES Power

Overview

Switch ES Power



Adjustment of parameter set A with Switch ES Power

Switch ES Power is the shared software platform for communication-capable SENTRON circuit breakers. This has the advantage that all device-specific setting options are identical in terms of appearance and handling.

Switch ES Power can be used to configure, document, operate and monitor the SENTRON 3WL and SENTRON 3VL circuit breakers through PROFIBUS DP.

More information can be found on the Internet at: <http://www.siemens.com/sentron>

Benefits

- Parameterization, documentation, operation and monitoring in one software
- Documentation of measured values and settings
- Clear presentation of all available parameters
- All the available status information and measured values are clearly displayed in dialog boxes
- One software for SENTRON 3WL and SENTRON 3VL
- Easy connection build-up through acyclic PROFIBUS DP-V1 data traffic
- Identical storage format for parameters with the Breaker Data Adapter (BDA)
- Easy-to-operate Windows interface
- No programming knowhow is required for operation

Object manager of Switch ES Power

- Uniform data management for circuit breaker parameters
- Automatic parameterization if components are replaced

Selection and ordering data

Version	DT	Order No.	Price per PU	PU (UNIT, SET, M)	PS*	PG	Weight per PU approx. kg
Switch ES Power Calibration, documentation, operation and monitoring of SENTRON 3WL/3VL circuit breakers through PROFIBUS DP; runs under Windows 95/98/NT/2000/XP Professional, including online help, the language can be switched between German and English; including Object Manager (OM) for Switch ES Power for integration in STEP7 <u>System requirements:</u> PROFIBUS card: CP5512, CP5611, CP5613 or CP5614 and MPI interface on PG7xx and its driver software, see interactive Catalog CA 01, CD-ROM drive <u>System requirements for OM Switch ES Power:</u> SIMATIC: S7, M7, C7, PCS7 STEP 7: Version 5.2 or higher CD-ROM drive	A	3ZS2 311-0CC10-0YA0		1	1 unit	133	0.200

* You can order this quantity or a multiple thereof.

Software for Power Distribution

Notes